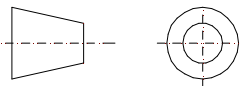


THIRD ANGLE
PROJECTION



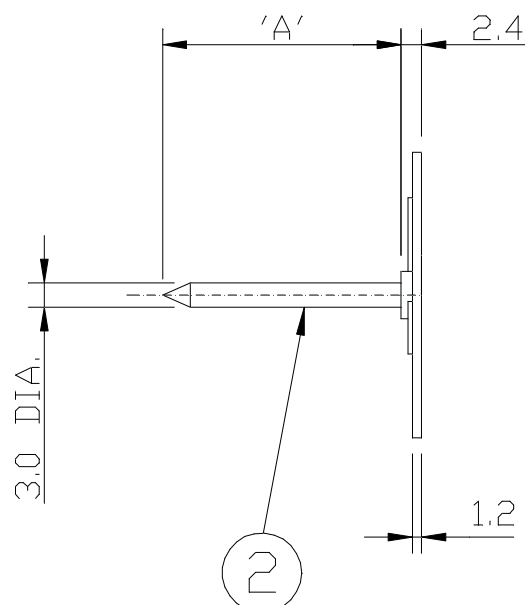
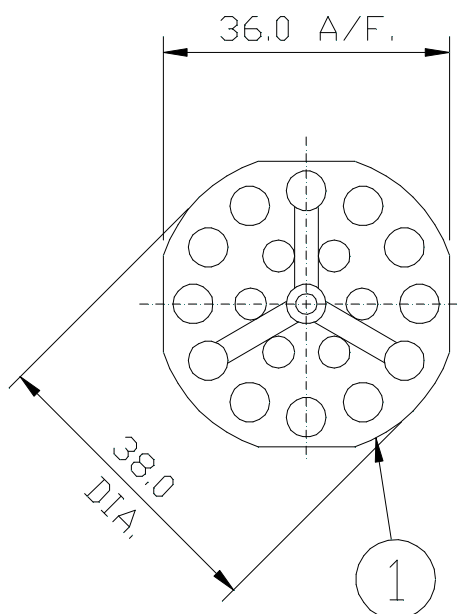
ALL DIMENSIONS
IN MILLIMETRES.

DRG. NO.
M5-B38-3.0

DRG. CONFORMS TO B.S.308

SCALE: FULL SIZE

DATE: 02/10/98



PROJECTION WELDED
TO ITEM 1.

5 EXTRA LENGTHS ADDED
24/07/03

MATERIALS:
ITEMS 1 & 2, MILD STEEL

FINISH: ZINC PLATE & GOLD PASSIVATE
TO BS.1706, DEF,130

ITEM	PART No.	DESCRIPTION.	QTY.	PRODUCT NUMBER (& ORDERING CODE)	LENGTH 'A'(mm)	WEIGHT (Kg/100)
1	B38	PERFORATED PLATE	1			
2	6000	3.0 PIN	1	M5/B38-3.0X25	25	0.86
3 OR				M5/B38-3.0X30	30	0.89
				M5/B38-3.0X40	40	0.94
4				M5/B38-3.0X50	50	1.00
				M5/B38-3.0X60	60	1.06
				M5/B38-3.0X75	75	1.13
				M5/B38-3.0X100	100	1.28

BIGHEAD BONDING FASTENERS LTD.
BOURNEMOUTH ENGLAND.

TITLE:
B38 PIN FASTENER

DRG.NO.
M5-B38-3.0

ISSUE
6